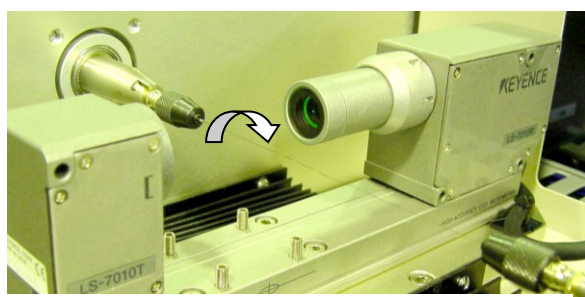


# SK2000

## Hair Diameter Measurement Unit

Among the various methods of measuring the properties, accurately grasping the outer circumference of hair, a basic characteristic, enables us to have data feedback that we can use for other property measurements.



Sample hair is rolled and measured by laser-beam

### CHUCK

Because this product chucks both ends of hair, measurements can be taken without interference from factors such as wind.

Also, because both ends turn at the same time, the hair does not get twisted.

### SENSOR

The sensor moves in the same direction of the hair's growth, making it possible to easily grasp the hair's shape in the direction of growth.

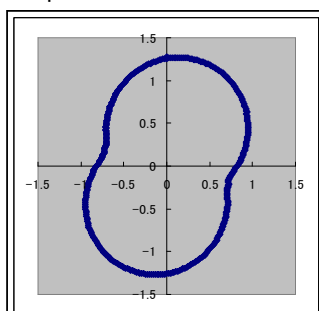
### MODE

Measurement by 1° /point 360 points around a hair

One time measurement for each Peak and Bottom value

### Data analysis

Data is recorded and stored in PC and analyzed as Excel data.



No.5-1 deg	sin	cos
1.2556	0	1.2556
1.26	0.021990032	1.259808
1.2644	0.044126923	1.26363
1.2695	0.066440495	1.26776
1.2687	0.088500037	1.26561
1.2724	0.110896965	1.267558
1.2753	0.133305147	1.268314



KATO TECH CO., LTD.

URL: <https://english.keskato.co.jp>

KatōTech

## SPECIFICATION

SK2000 (Main Device)	
Dimension / Weight	W750 (Excluding any protuberance) × D500 × H500 (mm) / 60kg
Accuracy of measurement	Resolution ability: 0.1 μm
Sample size (Hair)	<ul style="list-style-type: none"> <li>• Diameter φ 0.05 ~ φ 1mm</li> <li>• Length 50 ~ 170mm</li> <li>• Measurement part 30 ~ 150mm (10mm of both ends for grasping are included)</li> </ul>
Chucking part	Pin chuck type (2pieces/1set)
Chuck rotating speed	<ul style="list-style-type: none"> <li>• 360degree measurement mode 1rpm</li> <li>• P-B mode 2rpm</li> </ul>
Drive of rotating part	Stepping motor
Moving range of sensor part	0 ~ 150mm
Moving pitch of sensor part	0 ~ 99mm (1mm pitch)
Moving speed of sensor part	Approx. 30mm/sec
Drive of moving part	Stepping motor
Operation part	Touch panel system
Power	100V AC
SK2000 (Sensor)	
Sensor and controller	LS-7000 series by Keyence company
SK2000 (Data collection part)	
Sequencer	KV-700 by Keyence company
Monitoring software	COM+ by Keyence company *Can be analyzed as Microsoft Excel data
SK2000 (Measuring Mode)	
360 degree mode	360 measuring points (1 degree/point)
P-B mode	Peak and Bottom value are measured once each

※Specification is subject to change without notice.



## KATO TECH CO., LTD

26 Karato-cho, Nishikujo, Minami-ku, Kyoto, 601-8447 JAPAN

Tel: +81-75-681-5244 Fax: +81-681-5243

<https://english.keskato.co.jp/>